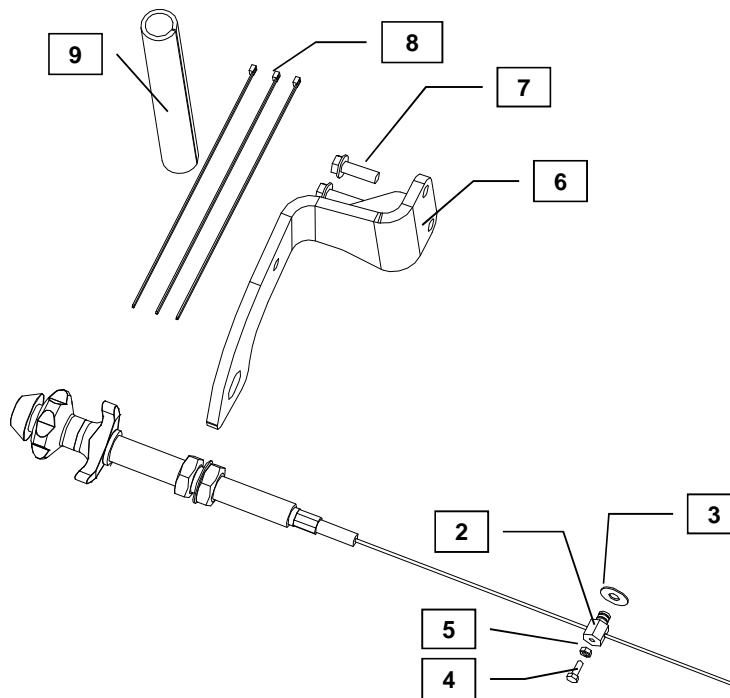


Kit Name: KSC2



YANMAR CO., LTD.  
YANMAR AMERICA CORP.

Item	Part No.	Description	Quantity	Remarks
1	129087-66061	Cable, Throttle (Vernier)	1	
2	124756-67510	Retainer, Throttle Cable	1	
3	22272-000070	E-clip	1	
4	26116-040128	Bolt, M4x0.7-12	1	
5	26716-040002	Nut, M4x0.7	1	
6	119749-91010	Bracket, Throttle Cable	1	
7	26106-080252	Bolt, M8x1.25-25 (Flanged Hex Head)	2	
8	119749-91020	Tie, Cable	3	
9	119749-91030	Loom, Fuel Line	1	



**MODELS**

2TNV70 3TNV70  
3TNV76

Notes: Parts code is not assigned to non-servicable component parts.

Remarks:



## Installation Instructions

Hand tighten all bolts and nuts until assembly is completed, then torque according to specifications in Table 1.

The numbers in ( ) below reference the item numbers on page 1.

1. Remove two bolts from the lifting eye assembly on flywheel housing side. Place the Throttle Cable Bracket (2) on lifting eye and tighten them to the same location with 2 - M8x1.25-25 bolts (1).
2. Remove the nut, washer, and fitting from the end of the Speed Control Assembly (8) and insert the Speed Control Assembly through the hole in the Throttle Cable Bracket (2). Reinstall the washer and nut.
3. Remove the wire from the conduit and cut the conduit to the length per the table above and reinstall the wire in the conduit.
4. Insert the speed control Assembly wire in the Retainer (7), reinstall the fitting that was removed at Step 2, and make sure the speed control knob is all the way down.
5. Insert the Retainer (7) to lower hole of the throttle control lever and insert the #-Clip (3) into the groove closer to the Retainer body. Tighten M4x0.7-12 (4) and M4x0.7 Nut (5) enough to secure the Throttle Cable without breaking the Bolt. After tightening, make sure the Throttle Control lever is up against the idle stop adjustment screw.
6. The wire should extend at least 10 mm (0.4 inches) past the wire retainer. Cut off the excess wire.
7. Tighten all nuts and bolts per tightening torque stated in Table 1.
8. Wrap fuel line from the fuel filter to FIE with plastic loom, cut off excess, tie both its ends with cable ties, and secure it to the hole on the bracket with the cable tie.

NOTE: Comply with torque standards in the table to avoid unexpected damage during installation or in the future.

**Table 1: Tightening Torque**

Diameter x Pitch	Kgf-m	Foot-lbf	N-m
M8 x 1.25	1.5 ~ 2.9	10.6 ~ 20.9	14.4 ~ 28.3
M10 x 1.50	4.5 ~ 5.5	32.5 ~ 39.8	44.0 ~ 54.0
M12 x 1.75	8.0 ~ 10.0	57.8 ~ 72.3	78.4 ~ 98.0