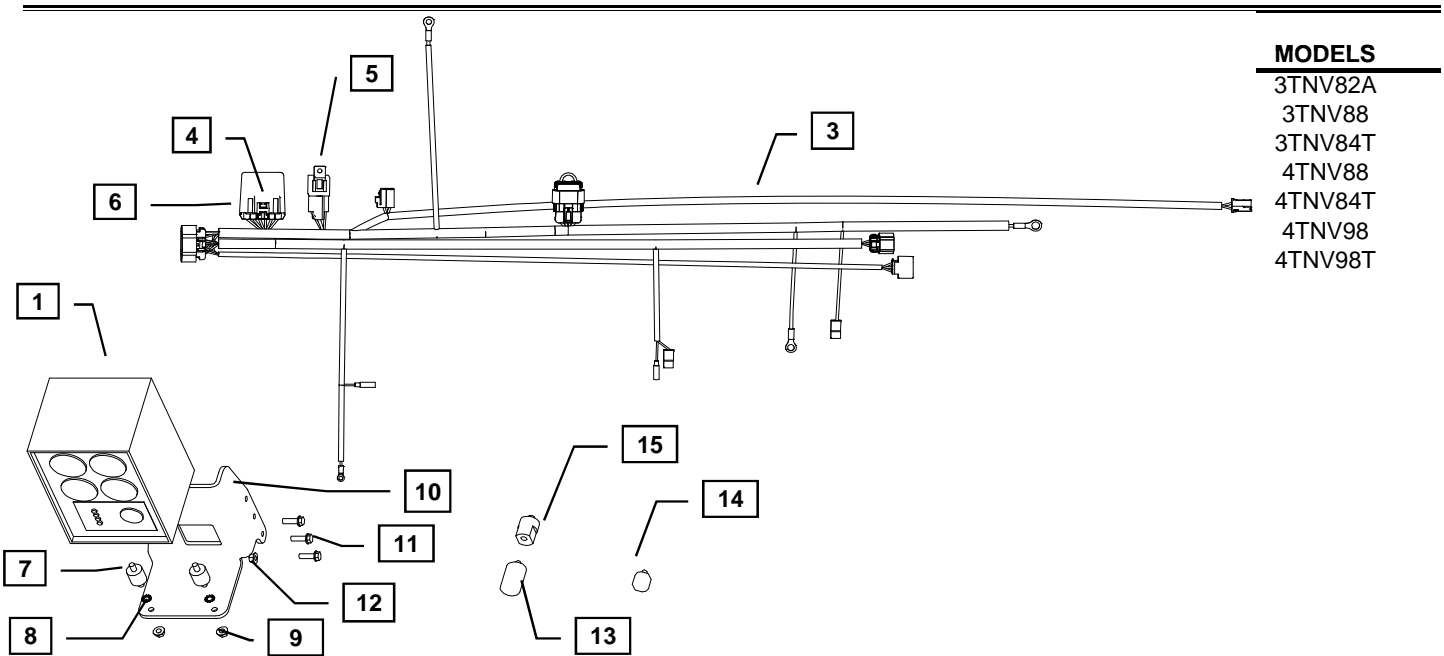




YANMAR CO., LTD.
YANMAR AMERICA CORP.

Item	Part No.	Description	Quantity	Remarks
1	129689-91210	Gauge Panel (DI)	1	
3	129687-91100	Wiring Harness (DI)3	1	(B)
4	119749-91420	Control Module Timer	1	
5	119749-91460	Relay 70A 12V Sealed	1	
6	119749-91440	Control Module Housing	1	
7	129689-92100	Isolator Mount M6 x 1.0	3	
8	129689-91180	Washer, M6 (star)	3	(A)
9	26366-060002	Nut, M6 x 1.0 (Flange hex head)	3	
10	129689-91230	Panel Mounting Bracket	1	
11	26106-080252	Bolt, M8 X 1.25 - 25 (Flanged hex head bolt)	3	
12	26366-080002	Nut, M8 X 1.25 (Flanged hex head)	3	
13	129689-91260	Oil Pressure Sender/Switch (bspt)	1	
14	129689-91250	Water Temperature Sender/Switch (M16)	1	
15	171375-39601	Damper 1/8 BSPT - 1/8 BSPT	1	



Remarks: (A) 129689-91180 is not a service part and does not need to be replaced.
 (B) When utilizing the Yanmar harness to a control panel that has 10 ft. or more of wiring between them, you must install a relay, 119749-91400.



Installation Instructions

Hand tighten all bolts and nuts until assembly is completed, then torque according to specifications in Table 1. The numbers in () represent the item numbers.

1. Fasten Control Panel (1) to the Mounting Bracket (10) using Isolators (7), Star Washers (8) and Lock Nuts (9). Star washers should be installed between isolators and bracket.

NOTE: Make sure isolators are not twisted during installation to avoid premature failure of components.

2. Assemble Control Panel (1) and Mounting Bracket (10) assembly to injection pump side rear engine leg using M8 x 25 bolts (11) and M8 Flange Nuts (12).
3. Replace the standard oil pressure switch on the engine with the provided Oil Pressure Sender (13), Damper (15) and Plug. Use thread tape on installation of components.
4. Replace the standard coolant temperature switch on the engine with the provided Water Temperature Sender (14). Use thread tape on installation of components.
3. Connect harness terminals to appropriate locations. See engine wiring harness diagram and schematics provided with panel kit.

NOTE: The spare ring terminal in the kit is for the S-Terminal on the Denso starter. The spade connector, for the Hitachi starter, will have to be replaced with the ring terminal if Denso Starter is equipped.

4. Use the Retainer Clip to mount the Relay (5) to an open thread bore on the cylinder head.
5. After connecting all terminals to appropriate locations, check the following:
 - a) Make sure the wires do not contact the exhaust manifold or muffler.
 - b) Make sure the wires do not contact any sharp or abrasive surfaces.
 - c) Use wire ties to secure the wire harness to the engine.
 - d) Cover all harness terminals not used after assembly is completed

WARNING: Be sure battery cables are connected correctly before operation. If at any time during operation, the battery cables are removed, the harness could fail prematurely.

NOTE: Application requiring a harness extension to a control panel over 10Ft in length must use the starter relay at the connector labeled Starter Jumper, 119749-91400.

Refer to harness drawing for additional design requirements for consideration of application. A troubleshooting guide is available through Yanmar's Distributor Website or by contacting Yanmar America's Service Department.

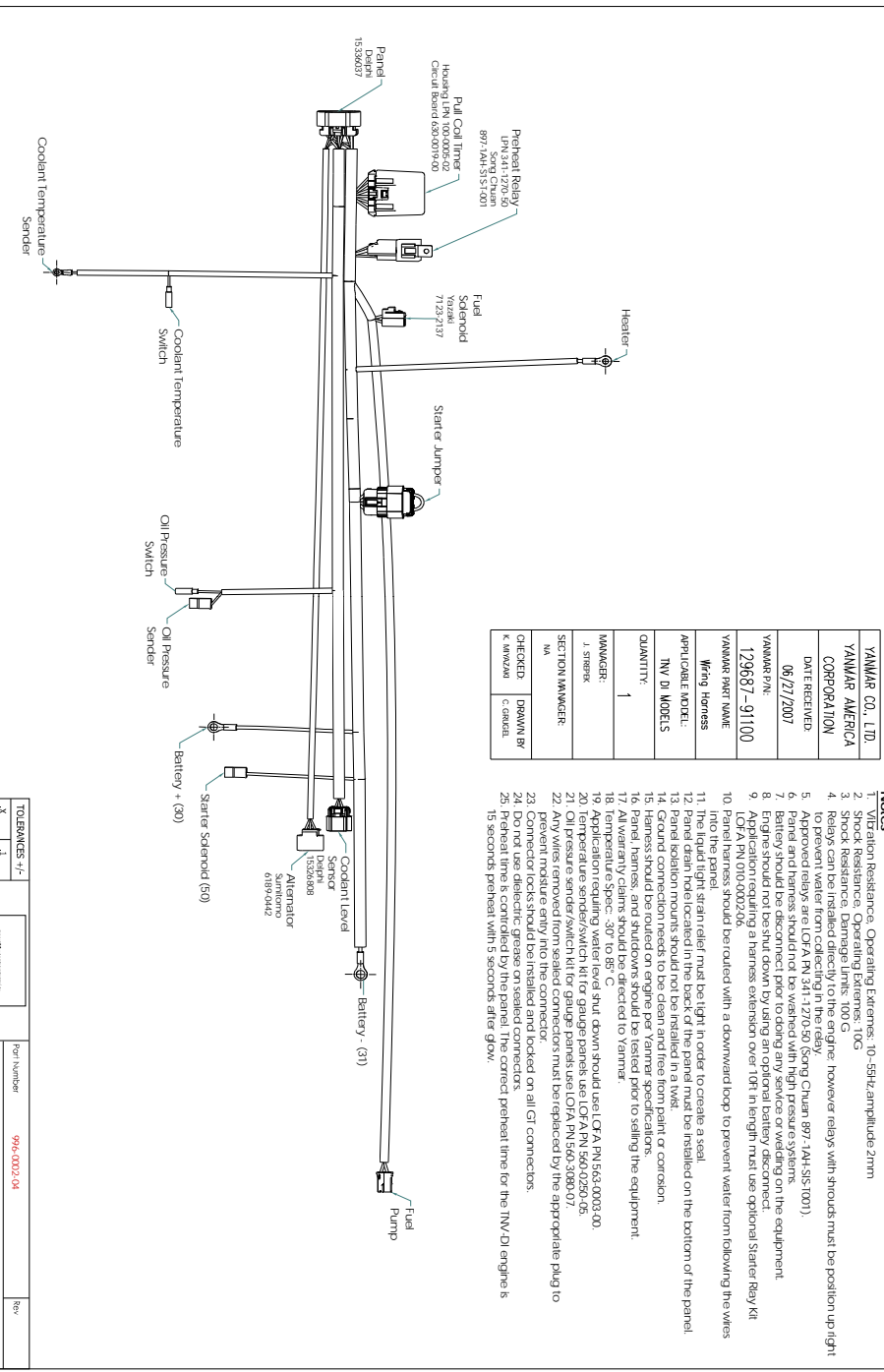
Table 1: Comply with torque standards in the table to avoid unexpected damage during installation or in the future.

Diameter x Pitch	Kgf-m	Foot-lbf	N-m
M8 x 1.25	1.5 ~ 2.9	10.6 ~ 20.9	14.4 ~ 28.3
M10 x 1.50	4.5 ~ 5.5	32.5 ~ 39.8	44.0 ~ 54.0
M12 x 1.75	8.0 ~ 10.0	57.8 ~ 72.3	78.4 ~ 98.0



Installation Instructions

©THE INFORMATION CONTAINED IN THIS DRAWING IS CONFIDENTIAL AND THE SOLE PROPERTY OF LOVA INDUSTRIES INC. Reproduction or dissemination in whole or in part in any form or medium without express prior written permission of LOVA INDUSTRIES INC is prohibited. All rights of design reserved.



YANMAR CO., LTD.	YANMAR AMERICA CORPORATION
DATE RECEIVED: 06/27/2007	YANMAR P/N: 129687-91100
YANMAR PART NAME: Wiring Harness	APPLICABLE MODEL: TNV DI MODELS
QUANTITY: 1	MANAGER: J. STRIPEK
CHECKED: K. MIZUJI	SECTION MANAGER: MA
DRAWN BY: C. GARDIA	

Notes

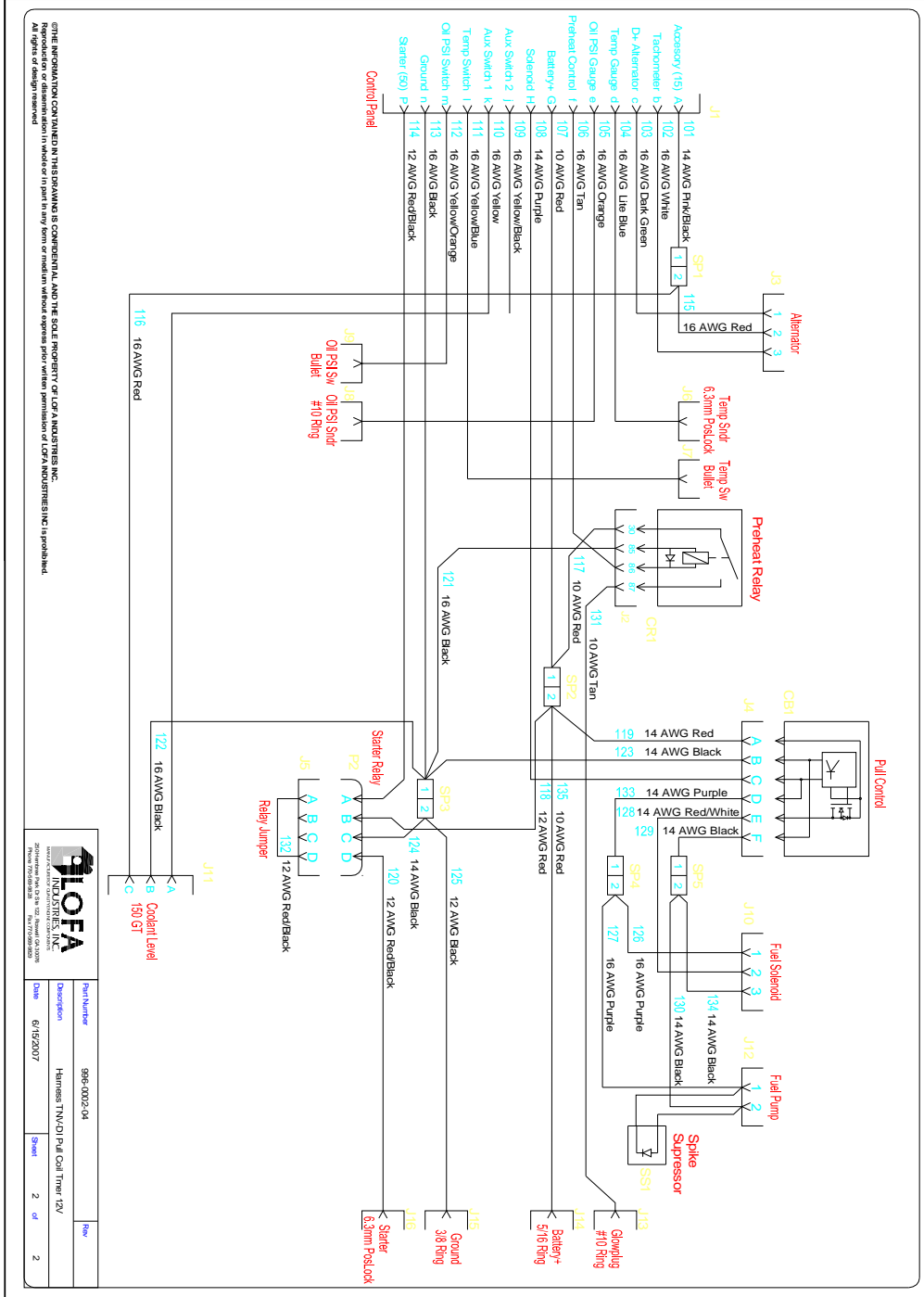
- Vibration Resistance, Operating Extremes: 10-55Hz/amplitude 2mm
- Shock Resistance, Operating Extremes: 10G
- Panel harness should be installed in the rack.
- Relays can be installed directly to the engine, however relays with shrouds must be position up right to prevent water from collecting in the relay.
- Approved relays are LFA PN 341-1270-50 (Song Chuan 897-1A4-SIS-1001).
- Panel and harness should not be washed with high pressure systems.
- Battery should be disconnected prior to doing any service or working on the equipment.
- Panel harness should be washed with water after use.
- Application requiring a harness extension over 10ft in length must use optional Starter Relay Kit LFA PN 010-0002-06.
- Panel harness should be routed with a downward loop to prevent water from following the wires into the panel.
- Preheat light strain relief must be tight in order to create a seal.
- Preheat light strain relief must be installed in the rack.
- Panel isolation mounts should not be installed in a twist.
- Ground connection needs to be clean and free from paint or corrosion.
- Harness should be routed on engine per Yanmar specifications.
- Panel, harness, and studowns should be tested prior to selling the equipment.
- All warranty claims should be directed to Yanmar.
- Application requiring water level shut down should use LFA PN 563-0003-00.
- Application requiring water level shut down should use LFA PN 560-0250-05.
- Oil pressure sender/switch kit for gauge panels use LFA PN 560-3080-07.
- Temperature sender/switch kit for gauge panels use LFA PN 560-3080-07.
- Any wires removed from sealed connectors must be replaced by the appropriate plug to prevent moisture entry to the connector.
- Panel harness should be tested at the end of the harness.
- Do not use dielectric grease on sealed connectors.
- Preheat time is controlled by the panel. The correct preheat time for the TNV-DI engine is 15 seconds preheat with 5 seconds after glow.

TOLERANCES +/-	
X	.1
.XX	.01
.XXX	.005
MFG	1P

Part Number	996-0002-04	Rev	
Description	Harness TNV/DI/Pull Coil Timer 12V	Sheet	1 of 2
Date	6/15/2007		



Installation Instructions



THIS INFORMATION CONTAINED IN THIS DRAWING IS CONFIDENTIAL AND THE SOLE PROPERTY OF LOFA INDUSTRIES, INC. Reproduction or dissemination in whole or in part in any form or medium without express prior written permission of LOFA INDUSTRIES, INC. is prohibited. All rights are design reserved.

LOFA INDUSTRIES, INC.		Part Number	998-0002-04	Rev	
20200819 Rev 02 01/22 (Revised 03/20/20)		Description	Harness TNA/D Pull Out Trm TV	Sheet	2 of 2
Date	6/15/2007	Drawn		Checked	